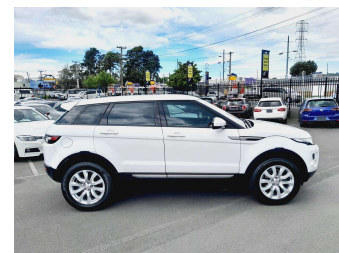


2015 Land Rover Range Rover Evoque TD4 2.2D



Purchase Price
Includes GST, Registration & Licensing

\$24,995

Finance may be available on this vehicle. Ask one of our friendly staff for more information.




Gain peace of mind with Mechanical Breakdown Insurance. **Ask us how.**



Top features

None Listed

Body Style
5 door, SUV / 4x4

Odometer
82,100 km

Engine
2179 cc, In-line 4 cylinder

Fuel Type
Diesel


Transmission
Automatic, Tiptronic, 4WD

Wheels
Factory Alloys

VIN
SALVA2AC6FH031134

Interior
Black, Leather

Safety



Based on 2023 UCSR rating for 11-18 models

Reg No.
HZU28

Ext Colour
White

History
NZ New

Seats
5 seats, Leather

CO2 Emissions
★★★★☆
186 grams/km

Energy Economy
★★★★☆☆
Annual fuel cost of \$3,020
7L per 100km

Cost per year is an estimate based on diesel price of \$2.00 per litre and an average distance of 14000 km includes Road User Charges. Emissions and Energy Economy figures standardised to 3P WLTP.

Stock ID: 12567



Vision Autos | Phone 09 525 1780 | Email sales@visionautos.co.nz
89 Station Road, Penrose, Auckland 1061, New Zealand
www.visionautos.co.nz