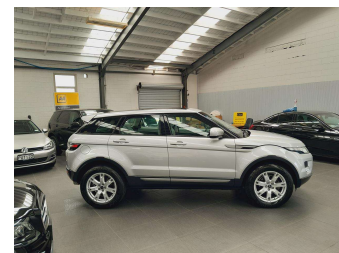


# 2013 Land Rover Range Rover Evoque SI4PURETECH



**Purchase Price** **\$22,995**  
Includes GST, Registration & Licensing

Finance may be available on this vehicle. Ask one of our friendly staff for more information.

Gain peace of mind with Mechanical Breakdown Insurance. **Ask us how.**

**Top features**  
None Listed

**Body Style**  
5 door, SUV / 4x4

**Odometer**  
103,030 km

**Engine**  
1999 cc, In-line 4 cylinder

**Fuel Type**  
Petrol

**Transmission**  
Automatic, Tiptronic, 4WD

**Wheels**  
Factory Alloys

**VIN**  
SALVA2AG4DH751984

**Interior**  
Ivory, Leather

**Safety**  
 5 star safety rating  
Based on 2023 UCSR rating for 11-18 models

**Reg No.**  
GSU492

**Ext Colour**  
Silver

**History**  
NZ New

**Seats**  
5 seats, Leather

**CO2 Emissions**  
★★★★☆☆  
222 grams/km

**Energy Economy**  
★★★★☆☆  
Annual fuel cost of \$3,800  
9.7L per 100km

Cost per year is an estimate based on petrol price of \$2.80 per litre and an average distance of 14000 km. Emissions and Energy Economy figures standardised to 3P WLTP.

**Stock ID: 13289**



Vision Autos | Phone 09 525 1780 | Email sales@visionautos.co.nz  
89 Station Road, Penrose, Auckland 1061, New Zealand  
www.visionautos.co.nz