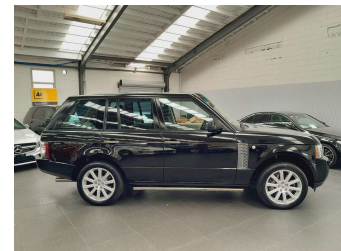




2010 Land Rover Range Rover Vogue 5.0L



Purchase Price **\$28,995**
Includes GST, Registration & Licensing

Finance may be available on this vehicle. Ask one of our friendly staff for more information.

BMW Financial Services
 
New Zealand's Finance Company

Gain peace of mind with Mechanical Breakdown Insurance. **Ask us how.**



Top features

None Listed

Body Style
5 door, SUV / 4x4

Odometer
115,360 km

Engine
4999 cc, Flat 6 Cylinder

Fuel Type
Petrol

Transmission
Automatic, Tiptronic, 4WD

Wheels
20", Factory Alloys

VIN
SALLMAME3AA324476

Interior
Black, Leather

Safety


Based on 2024 VSRR rating

Reg No.
MHA63

Ext Colour
Black

History
Ex-Overseas, 1 owner

Seats
5 seats, Leather

CO2 Emissions
☆☆☆☆☆☆
388 grams/km

Energy Economy
☆☆☆☆☆☆
Annual fuel cost of \$6,510

Cost per year is an estimate based on petrol price of \$2.80 per litre and an average distance of 14000 km. Emissions and Energy Economy figures standardised to 3P WLTP.

Stock ID: 13363